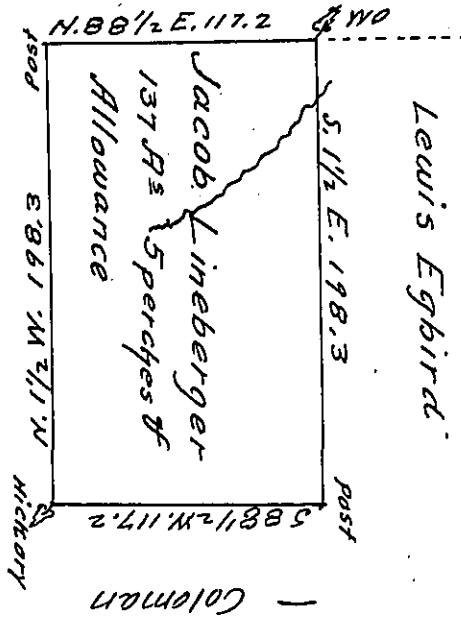


Donation Lot No 1032 of 200 Acres S. & Donation Dist.

Land patented to
Wm. Vogan



Situate in Sandy Lake Township Mercer County on the waters
of Little Sandy Creek Containing One hundred and thirty
seven acres and five perches and allowance of Six per cent
for Roads &c. Surveyed April 22nd A.D. 1850 for Jacob Lineberger
in pursuence of his improvement and actual residence there-
on Surveyed by me John Findley D.S.
To John Laporte Esq.
Surveyor General.

IN TESTIMONY that the above is a copy of the original remaining on file in
the Department of Internal Affairs of Pennsylvania, made
conformably to an Act of Assembly approved the 16th day of
February, 1833, I have hereunto set my Hand and caused
the Seal of said Department to be affixed at Harrisburg,
this twenty-third day of October 1905

Loac D. [Signature]
Secretary of Internal Affairs.